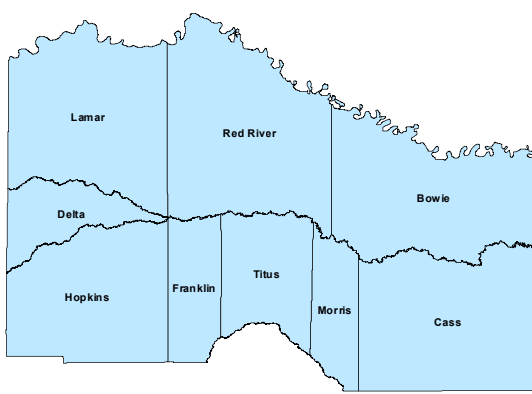
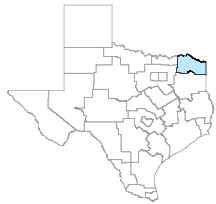


North East Workforce Development Area

BRQpdf Evaluation 09/19/2019

August 2019



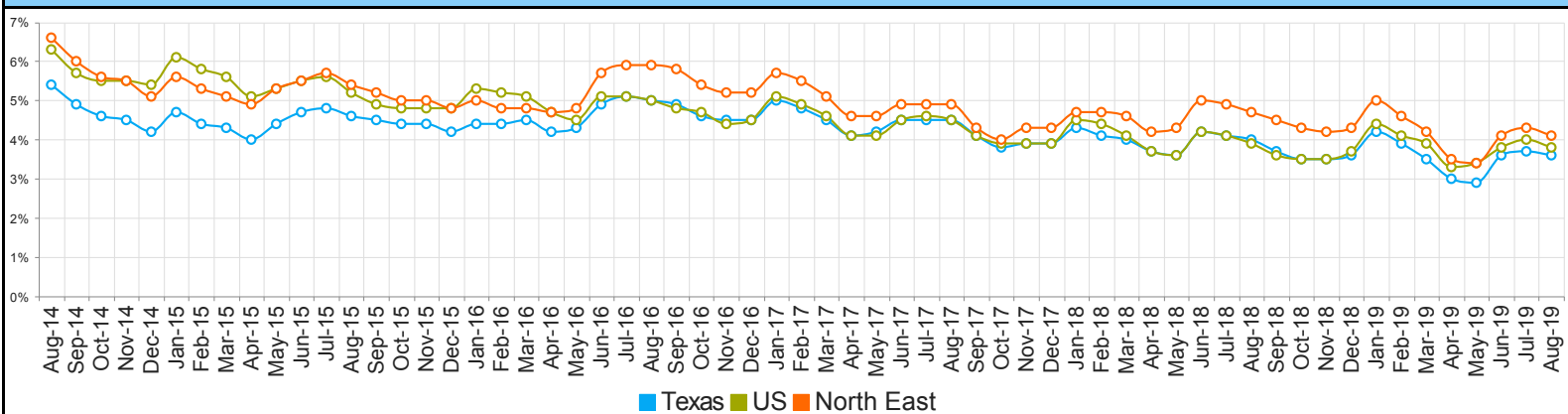
WDA Labor Force Statistics				
	Aug-19	Jul-19	Aug-18	Yearly Change
Civilian Labor Force	122,354	121,981	121,818	536
Employed	117,277	116,742	116,089	1,188
Unemployed	5,077	5,239	5,729	-652
Unemployment Rate	4.1%	4.3%	4.7%	-0.6%

Texas Labor Force Statistics				
	Aug-19	Jul-19	Aug-18	Yearly Change
Civilian Labor Force	14,015,573	14,063,720	13,768,541	247,032
Employed	13,508,756	13,539,870	13,222,420	286,336
Unemployed	506,817	523,850	546,121	-39,304
Unemployment Rate	3.6%	3.7%	4.0%	-0.4%

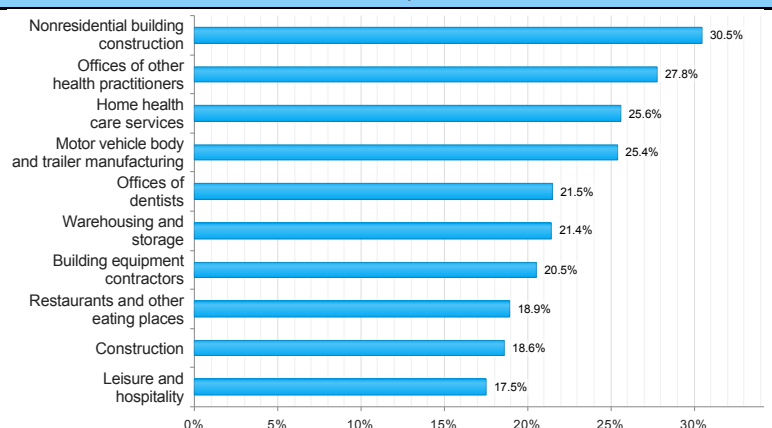
US Labor Force Statistics				
	Aug-19	Jul-19	Aug-18	Yearly Change
Civilian Labor Force	164,019,000	164,941,000	161,909,000	2,110,000
Employed	157,816,000	158,385,000	155,539,000	2,277,000
Unemployed	6,203,000	6,556,000	6,370,000	-167,000
Unemployment Rate	3.8%	4.0%	3.9%	-0.1%

Continued Claims for the Week of the 12th				
	Aug-19	Jul-19	Aug-18	Yearly Change
WDA	856	945	1,018	-162
Texas	94,100	104,088	93,251	849

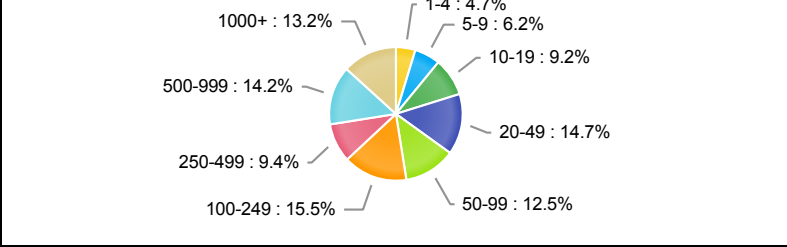
Historical Unemployment Rates



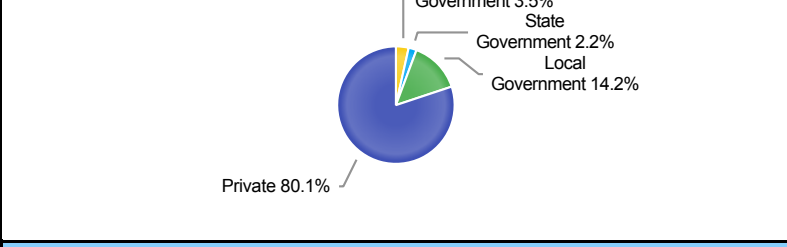
Projected Top Ten Fastest Growing Industries in WDA (% Growth 2016-2026)



Employment by Size Class (1st Quarter 2019)



Employment by Ownership (1st Quarter 2019)



Average Weekly Wage (1st Quarter 2019)					
	Q1 2019	Q4 2018	Q1 2018	Quarterly Change	Yearly Change
WDA	\$774	\$804	\$759	-\$30	\$15
Texas	\$1,204	\$1,148	\$1,168	\$56	\$36
US	\$1,184	\$1,144	\$1,152	\$40	\$32

Employment by Industry (1st Quarter 2019, Percent Change)

Industry	Employment	% of Total	% Quarterly Change	% Yearly Change
Natural Resources and Mining	1,250	1.1%	-6.4%	-12.8%
Construction	4,959	4.5%	-1.1%	7.9%
Manufacturing	18,220	16.6%	2.5%	3.4%
Trade, Transportation and Utilities	22,843	20.8%	-1.2%	-0.6%
Information	586	0.5%	1.6%	-16.8%
Financial Activities	4,141	3.8%	-1.4%	-3.3%
Professional and Business Services	6,718	6.1%	0.9%	4.3%
Education and Health Services	30,991	28.2%	0.3%	1.4%
Leisure and Hospitality	10,967	10.0%	-0.1%	3.0%
Other Services	2,327	2.1%	0.2%	-2.3%
Public Administration	7,004	6.4%	0.2%	-1.7%

Employment by Industry (1st Quarter 2019)

