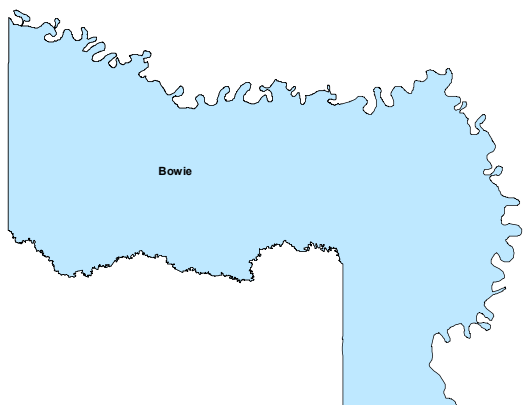
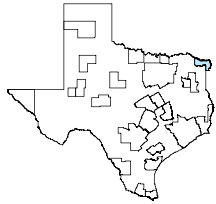


## Texarkana MSA

HiQpdf Evaluation 09/19/2019

August 2019



MSA Labor Force Statistics				
	Aug-19	Jul-19	Aug-18	Yearly Change
Civilian Labor Force	64,226	64,768	63,938	288
Employed	61,369	61,723	60,632	737
Unemployed	2,857	3,045	3,306	-449
Unemployment Rate	4.4%	4.7%	5.2%	-0.8%

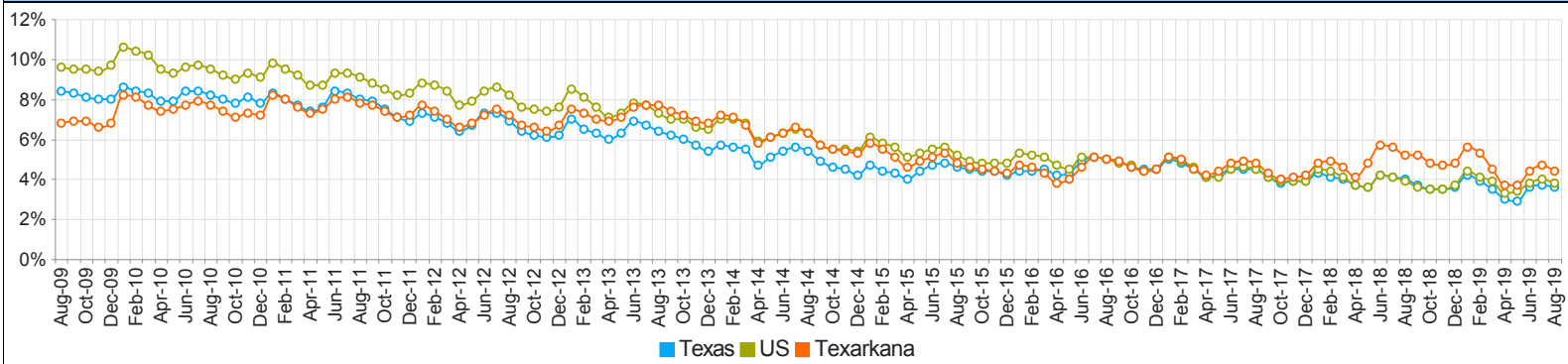
  

Texas Labor Force Statistics				
	Aug-19	Jul-19	Aug-18	Yearly Change
Civilian Labor Force	14,015,573	14,063,720	13,768,541	247,032
Employed	13,508,756	13,539,870	13,222,420	286,336
Unemployed	506,817	523,850	546,121	-39,304
Unemployment Rate	3.6%	3.7%	4.0%	-0.4%

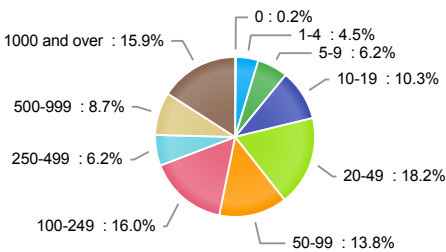
  

US Labor Force Statistics				
	Aug-19	Jul-19	Aug-18	Yearly Change
Civilian Labor Force	164,019,000	164,941,000	161,909,000	2,110,000
Employed	157,816,000	158,385,000	155,539,000	2,277,000
Unemployed	6,203,000	6,556,000	6,370,000	-167,000
Unemployment Rate	3.8%	4.0%	3.9%	-0.1%

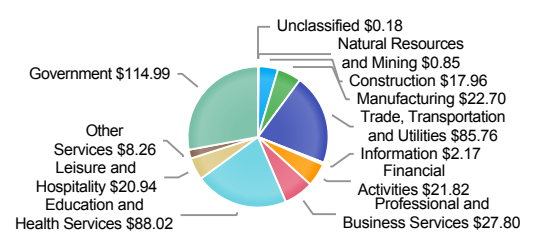
### Historical Unemployment Rates



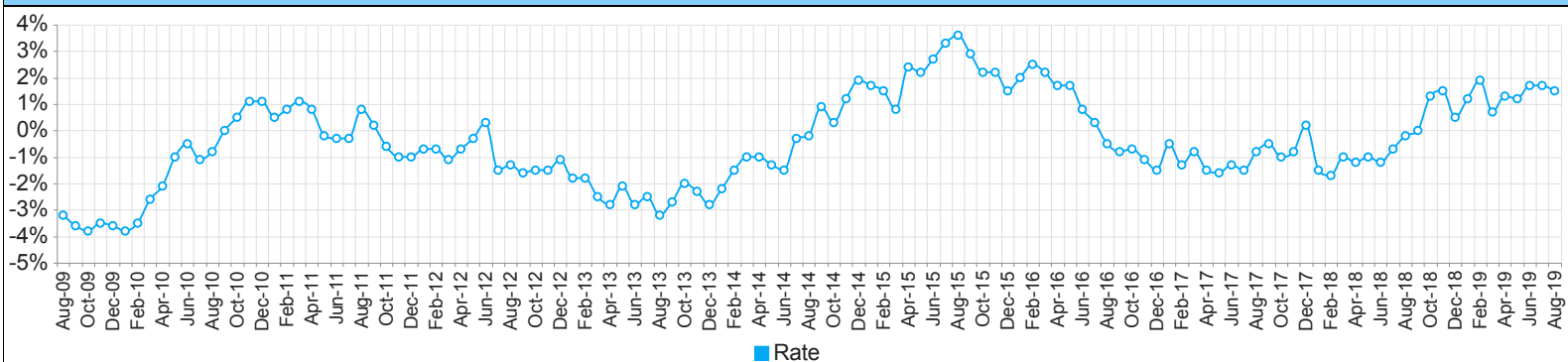
### Employment by Size Class (1st Quarter 2019)



### Wages by Industry (in millions) (1st Quarter 2019)



### Annual Growth Rate Total Non-agricultural employment



### Employment by Industry (August 2019)

Industry	Current Month Employment	% Monthly Change	% Yearly Change
Total Nonfarm	59,800	1.0%	1.5%
Mining, Logging and Construction	2,900	0.0%	3.6%
Manufacturing	5,400	0.0%	1.9%
Trade, Transportation, and Utilities	13,500	-0.7%	1.5%
Information	300	0.0%	0.0%
Financial Activities	2,200	0.0%	0.0%
Professional and Business Services	4,100	0.0%	-2.4%
Education and Health Services	9,800	1.0%	1.0%
Leisure and Hospitality	7,300	1.4%	4.3%
Other Services	2,200	0.0%	0.0%
Government	12,100	4.3%	1.7%

### Employment by Industry (August 2019)

