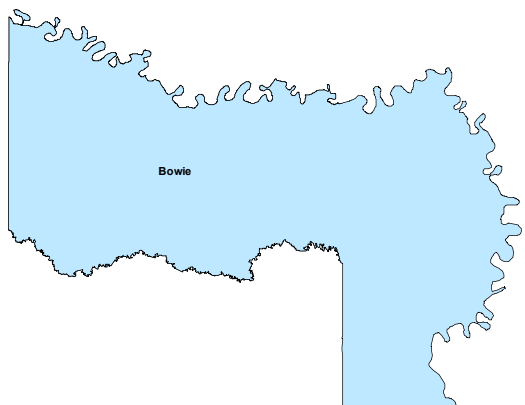
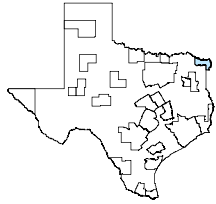


## Texarkana MSA

May 2021



### MSA Labor Force Statistics

	May-21	Apr-21	May-20	Yearly Change
Civilian Labor Force	64,340	63,982	62,095	2,245
Employed	60,700	60,224	55,821	4,879
Unemployed	3,640	3,758	6,274	-2,634
Unemployment Rate	5.7%	5.9%	10.1%	-4.4%

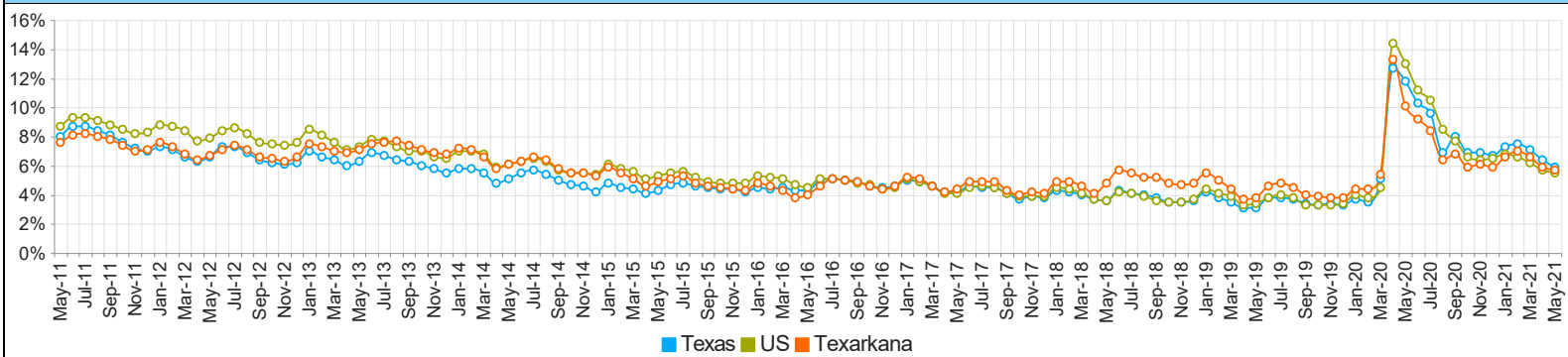
### Texas Labor Force Statistics

	May-21	Apr-21	May-20	Yearly Change
Civilian Labor Force	14,061,243	14,060,909	13,549,965	511,278
Employed	13,231,992	13,162,985	11,957,125	1,274,867
Unemployed	829,251	897,924	1,592,840	-763,589
Unemployment Rate	5.9%	6.4%	11.8%	-5.9%

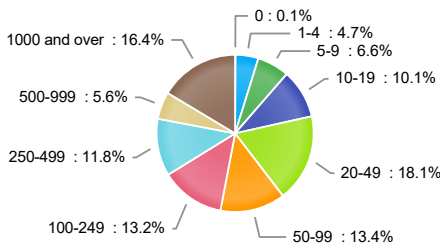
### US Labor Force Statistics

	May-21	Apr-21	May-20	Yearly Change
Civilian Labor Force	160,607,000	160,379,000	157,975,000	2,632,000
Employed	151,778,000	151,160,000	137,461,000	14,317,000
Unemployed	8,829,000	9,220,000	20,514,000	-11,685,000
Unemployment Rate	5.5%	5.7%	13.0%	-7.5%

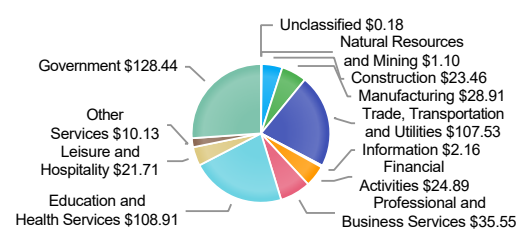
## Historical Unemployment Rates



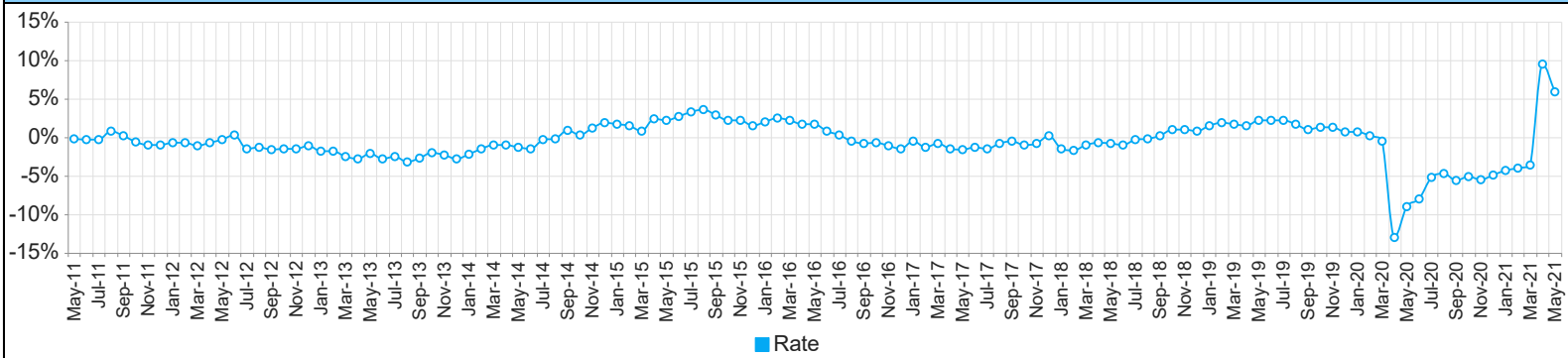
## Industry Size Class



## Wages by Industry (in millions) (4th Quarter 2020)



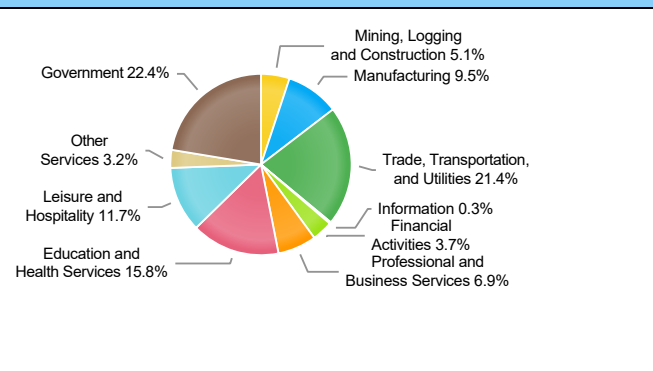
## Annual Growth Rate Total Non-agricultural employment

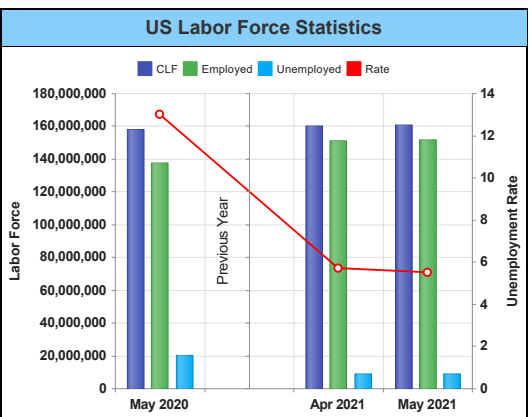
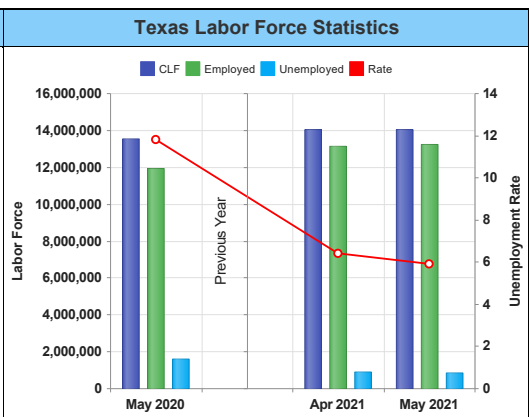
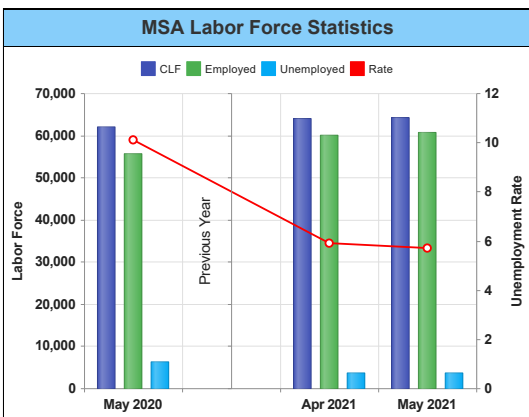


## Employment by Industry (May 2021)

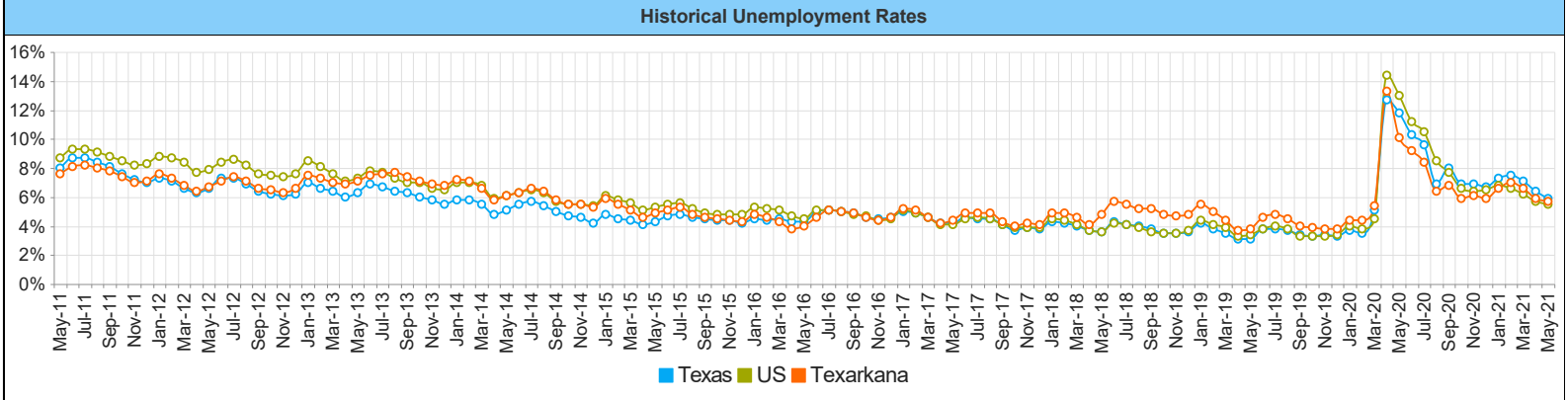
Industry	Current Month Employment	% Monthly Change	% Yearly Change
Total Nonfarm	59,000	1.9%	5.9%
Mining, Logging and Construction	3,000	0.0%	3.4%
Manufacturing	5,600	1.8%	12.0%
Trade, Transportation, and Utilities	12,600	1.6%	4.1%
Information	200	0.0%	0.0%
Financial Activities	2,200	0.0%	0.0%
Professional and Business Services	4,100	0.0%	7.9%
Education and Health Services	9,300	3.3%	2.2%
Leisure and Hospitality	6,900	3.0%	16.9%
Other Services	1,900	0.0%	0.0%
Government	13,200	2.3%	4.8%

## Employment by Industry (May 2021)





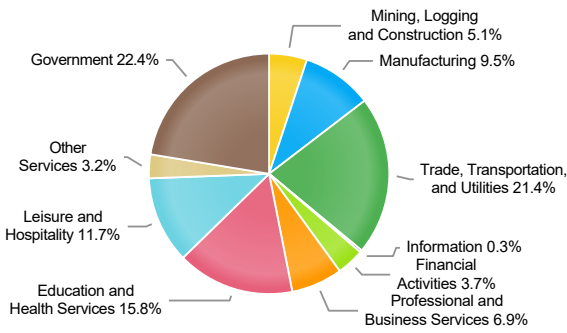
	May-21	Apr-21	May-20	Yearly Change
Civilian Labor Force	64,340	63,982	62,095	2,245
Employed	60,700	60,224	55,821	4,879
Unemployed	3,640	3,758	6,274	-2,634
Unemployment Rate	5.7%	5.9%	10.1%	-4.4%



Months	MSA	Texas	US
May-21	5.7	5.9	5.5
Apr-21	5.9	6.4	5.7
Mar-21	6.6	7.1	6.2
Feb-21	7.0	7.5	6.6
Jan-21	6.6	7.3	6.8
Dec-20	5.9	6.7	6.5
Nov-20	6.1	6.9	6.4
Oct-20	5.9	6.9	6.6
Sep-20	6.8	8.0	7.7
Aug-20	6.4	6.9	8.5
Jul-20	8.4	9.6	10.5
Jun-20	9.2	10.3	11.2
May-20	10.1	11.8	13.0
Apr-20	13.3	12.7	14.4
Mar-20	5.4	5.1	4.5
Feb-20	4.4	3.5	3.8
Jan-20	4.4	3.7	4.0
Dec-19	3.8	3.3	3.4
Nov-19	3.8	3.4	3.3
Oct-19	3.9	3.3	3.3
Sep-19	4.0	3.4	3.3
Aug-19	4.5	3.7	3.8
Jul-19	4.8	3.8	4.0
Jun-19	4.6	3.8	3.8
May-19	3.8	3.1	3.4
Apr-19	3.7	3.1	3.3
Mar-19	4.4	3.5	3.9
Feb-19	5.0	3.8	4.1
Jan-19	5.5	4.2	4.4
Dec-18	4.8	3.6	3.7
Nov-18	4.7	3.5	3.5
Oct-18	4.8	3.5	3.5
Sep-18	5.2	3.8	3.6
Aug-18	5.2	4.0	3.9
Jul-18	5.5	4.1	4.1
Jun-18	5.7	4.3	4.2
May-18	4.8	3.6	3.6
Apr-18	4.1	3.7	3.7
Mar-18	4.6	4.0	4.1
Feb-18	4.9	4.2	4.4
Jan-18	4.9	4.3	4.5
Dec-17	4.1	3.8	3.9
Nov-17	4.2	3.9	3.9
Oct-17	4.0	3.7	3.9
Sep-17	4.3	4.1	4.1
Aug-17	4.9	4.5	4.5
Jul-17	4.9	4.5	4.6
Jun-17	4.9	4.6	4.5
May-17	4.4	4.2	4.1
Apr-17	4.2	4.2	4.1
Mar-17	4.6	4.6	4.6
Feb-17	5.1	4.9	4.9
Jan-17	5.2	5.0	5.1
Dec-16	4.6	4.6	4.5
Nov-16	4.4	4.5	4.4

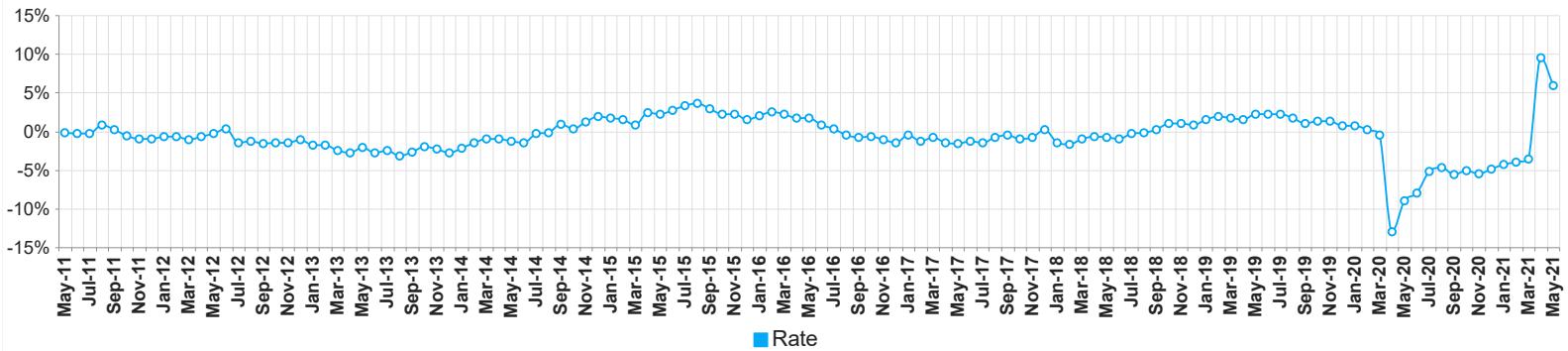
Months	MSA	Texas	US
Oct-16	4.6	4.6	4.7
Sep-16	4.9	4.9	4.8
Aug-16	5.0	5.0	5.0
Jul-16	5.1	5.1	5.1
Jun-16	4.6	5.0	5.1
May-16	4.0	4.3	4.5
Apr-16	3.8	4.3	4.7
Mar-16	4.3	4.5	5.1
Feb-16	4.6	4.4	5.2
Jan-16	4.8	4.5	5.3
Dec-15	4.3	4.2	4.8
Nov-15	4.4	4.4	4.8
Oct-15	4.5	4.4	4.8
Sep-15	4.6	4.5	4.9
Aug-15	4.8	4.6	5.2
Jul-15	5.3	4.8	5.6
Jun-15	5.1	4.7	5.5
May-15	4.9	4.3	5.3
Apr-15	4.6	4.1	5.1
Mar-15	5.1	4.4	5.6
Feb-15	5.5	4.5	5.8
Jan-15	5.9	4.8	6.1
Dec-14	5.3	4.2	5.4
Nov-14	5.5	4.6	5.5
Oct-14	5.5	4.7	5.5
Sep-14	5.8	5.0	5.7
Aug-14	6.4	5.4	6.3
Jul-14	6.6	5.7	6.5
Jun-14	6.3	5.5	6.3
May-14	6.1	5.1	6.1
Apr-14	5.8	4.8	5.9
Mar-14	6.6	5.5	6.8
Feb-14	7.1	5.8	7.0
Jan-14	7.2	5.8	7.0
Dec-13	6.8	5.5	6.5
Nov-13	6.9	5.8	6.6
Oct-13	7.1	6.0	7.0
Sep-13	7.4	6.3	7.0
Aug-13	7.7	6.4	7.3
Jul-13	7.6	6.7	7.7
Jun-13	7.5	6.9	7.8
May-13	7.1	6.3	7.3
Apr-13	6.9	6.0	7.1
Mar-13	7.0	6.4	7.6
Feb-13	7.3	6.6	8.1
Jan-13	7.5	7.0	8.5
Dec-12	6.6	6.2	7.6
Nov-12	6.3	6.1	7.4
Oct-12	6.5	6.2	7.5
Sep-12	6.6	6.4	7.6
Aug-12	7.1	6.9	8.2
Jul-12	7.4	7.3	8.6
Jun-12	7.1	7.3	8.4
May-12	6.7	6.6	7.9
Apr-12	6.4	6.3	7.7
Mar-12	6.8	6.6	8.4
Feb-12	7.3	7.1	8.7
Jan-12	7.6	7.3	8.8
Dec-11	7.1	7.0	8.3
Nov-11	7.0	7.2	8.2
Oct-11	7.4	7.6	8.5
Sep-11	7.8	8.1	8.8
Aug-11	8.0	8.4	9.1
Jul-11	8.2	8.7	9.3
Jun-11	8.1	8.7	9.3
May-11	7.6	8.0	8.7

### Employment by Industry



Industry	May-21	Apr-21	May-20	Monthly Change	Monthly Percent Change	Yearly Change	Yearly Percent Change
Total Nonfarm	59,000	57,900	55,700	1100	1.9%	3300	5.9%
Mining, Logging and Construction	3,000	3,000	2,900	0	0.0%	100	3.4%
Manufacturing	5,600	5,500	5,000	100	1.8%	600	12.0%
Trade, Transportation, and Utilities	12,600	12,400	12,100	200	1.6%	500	4.1%
Information	200	200	200	0	0.0%	0	0.0%
Financial Activities	2,200	2,200	2,200	0	0.0%	0	0.0%
Professional and Business Services	4,100	4,100	3,800	0	0.0%	300	7.9%
Education and Health Services	9,300	9,000	9,100	300	3.3%	200	2.2%
Leisure and Hospitality	6,900	6,700	5,900	200	3.0%	1000	16.9%
Other Services	1,900	1,900	1,900	0	0.0%	0	0.0%
Government	13,200	12,900	12,600	300	2.3%	600	4.8%

### Annual Growth Rate Total Non-agricultural employment

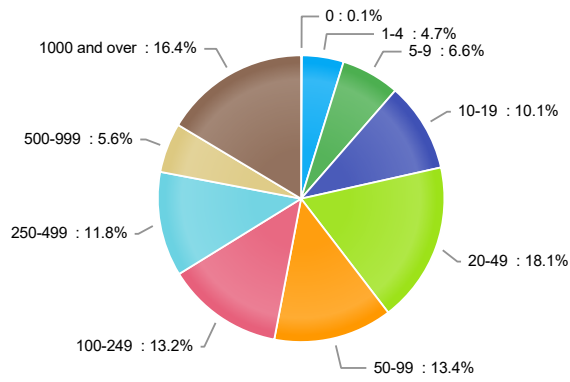


### Annual Growth Rate Total Non-agricultural employment table

Month	Employment Count	Annual Growth Rate
May-21	59000	5.9%
Apr-21	57900	9.5%
Mar-21	58100	-3.6%
Feb-21	57800	-4%
Jan-21	57600	-4.3%
Dec-20	58200	-4.9%
Nov-20	57900	-5.5%
Oct-20	57900	-5.1%
Sep-20	57200	-5.6%
Aug-20	57100	-4.7%
Jul-20	56600	-5.2%
Jun-20	56200	-8%
May-20	55700	-9%
Apr-20	52900	-13%
Mar-20	60300	-0.5%
Feb-20	60200	0.2%
Jan-20	60200	0.7%
Dec-19	61200	0.7%
Nov-19	61300	1.3%
Oct-19	61000	1.3%
Sep-19	60600	1%
Aug-19	59900	1.7%
Jul-19	59700	2.2%
Jun-19	61100	2.2%
May-19	61200	2.2%
Apr-19	60800	1.5%
Mar-19	60600	1.7%
Feb-19	60100	1.9%
Jan-19	59800	1.5%
Dec-18	60800	0.8%
Nov-18	60500	1%
Oct-18	60200	1%
Sep-18	60000	0.2%
Aug-18	58900	-0.2%
Jul-18	58400	-0.3%
Jun-18	59800	-1%
May-18	59900	-0.8%
Apr-18	59900	-0.7%
Mar-18	59600	-1%
Feb-18	59000	-1.7%
Jan-18	58900	-1.5%
Dec-17	60300	0.2%
Nov-17	59900	-0.8%
Oct-17	59600	-1%
Sep-17	59900	-0.5%
Aug-17	59000	-0.8%
Jul-17	58600	-1.5%
Jun-17	60400	-1.3%
May-17	60400	-1.6%
Apr-17	60300	-1.5%
Mar-17	60200	-0.8%
Feb-17	60000	-1.3%
Jan-17	59800	-0.5%
Dec-16	60200	-1.5%
Nov-16	60400	-1.1%
Oct-16	60200	-0.7%
Sep-16	60200	-0.8%
Aug-16	59500	-0.5%

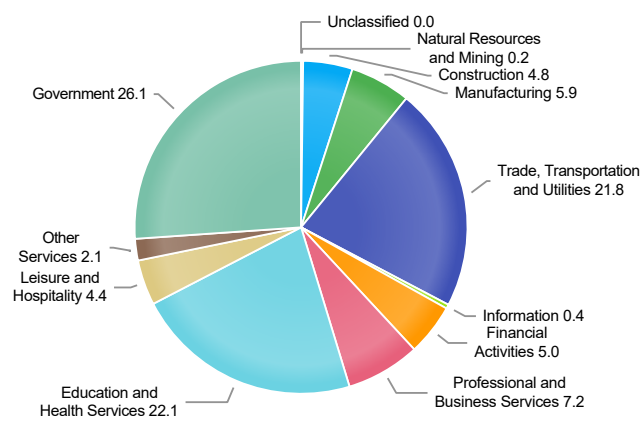
Month	Employment Count	Annual Growth Rate
Jul-16	59500	0.3%
Jun-16	61200	0.8%
May-16	61400	1.7%
Apr-16	61200	1.7%
Mar-16	60700	2.2%
Feb-16	60800	2.5%
Jan-16	60100	2%
Dec-15	61100	1.5%
Nov-15	61100	2.2%
Oct-15	60600	2.2%
Sep-15	60700	2.9%
Aug-15	59800	3.6%
Jul-15	59300	3.3%
Jun-15	60700	2.7%
May-15	60400	2.2%
Apr-15	60200	2.4%
Mar-15	59400	0.8%
Feb-15	59300	1.5%
Jan-15	58900	1.7%
Dec-14	60200	1.9%
Nov-14	59800	1.2%
Oct-14	59300	0.3%
Sep-14	59000	0.9%
Aug-14	57700	-0.2%
Jul-14	57400	-0.3%
Jun-14	59100	-1.5%
May-14	59100	-1.3%
Apr-14	58800	-1%
Mar-14	58900	-1%
Feb-14	58400	-1.5%
Jan-14	57900	-2.2%
Dec-13	59100	-2.8%
Nov-13	59100	-2.3%
Oct-13	59100	-2%
Sep-13	58500	-2.7%
Aug-13	57800	-3.2%
Jul-13	57600	-2.5%
Jun-13	60000	-2.8%
May-13	59900	-2.1%
Apr-13	59400	-2.8%
Mar-13	59500	-2.5%
Feb-13	59300	-1.8%
Jan-13	59200	-1.8%
Dec-12	60800	-1.1%
Nov-12	60500	-1.5%
Oct-12	60300	-1.5%
Sep-12	60100	-1.6%
Aug-12	59700	-1.3%
Jul-12	59100	-1.5%
Jun-12	61700	0.3%
May-12	61200	-0.3%
Apr-12	61100	-0.7%
Mar-12	61000	-1.1%
Feb-12	60400	-0.7%
Jan-12	60300	-0.7%
Dec-11	61500	-1%
Nov-11	61400	-1%
Oct-11	61200	-0.6%
Sep-11	61100	0.2%
Aug-11	60500	0.8%
Jul-11	60000	-0.3%
Jun-11	61500	-0.3%
May-11	61400	-0.2%

### Industry size class



Employees Per Firm	Employment In Size Class	Percentage Of Total Employment
0	55	0.1%
1-4	1938	4.7%
5-9	2709	6.6%
10-19	4155	10.1%
20-49	7448	18.1%
50-99	5485	13.4%
100-249	5428	13.2%
250-499	4831	11.8%
500-999	2287	5.6%
1000 and over	6725	16.4%

### Wages by Industry (in millions) (4th Quarter 2020)



Industry Title	Wages in millions (\$)
Natural Resources and Mining	1.10
Construction	23.46
Manufacturing	28.91
Trade, Transportation and Utilities	107.53
Information	2.16
Financial Activities	24.89
Professional and Business Services	35.55
Education and Health Services	108.91
Leisure and Hospitality	21.71
Other Services	10.13
Government	128.44
Unclassified	0.18